

PRODUCT CATALOG

TABLE OF CONTENTS

5

SMALL LINE/SLAB-ON-DECK

MINI-SCREED™ C	6
COPPERHEAD® XD™ 3.0	8
S-485	10
S-840	14
S-940	16

21

LARGE LINE/SLAB-ON-GRADE

S-10A	19
S-15R	21
S-22E	23
STS-11M	25

31

SOFTWARE PACKAGES

3-D PROFILER SYSTEM®	28
SITESHape®	34
FLOOR LEVELNESS SYSTEM®	35

37

FACTORY CERTIFIED REMANUFACTURED EQUIPMENT

39

PARTS & ACCESSORIES

Product specification and information is subject to change.

ABOUT US

Somero® Enterprises manufactures laser-guided, technologically innovative machinery used in horizontal concrete placement to advance the productivity, concrete flatness, and efficiency of the jobsite. We promote customer training, technical support, and continuous innovation for all of our products.

WE BELIEVE THAT OUR CUSTOMER'S SUCCESS IS OUR SUCCESS.

This is why we are so passionate about continually passing on Somero® knowledge and expertise to all our customers around the globe.

LOCATIONS

GLOBAL HEADQUARTERS & TRAINING FACILITY
14530 Global Parkway, Fort Myers, FL 33913 U.S.A.
1.239.210.6519

PRODUCTION, OPERATIONS, & SUPPORT
46980 Highway M26, Houghton, MI 49931 U.S.A.
1.906.482.7252

EUROPEAN SALES OFFICE
Broombank Road, Chesterfield Trading Estates, Derbyshire, UK 541 9QJ
+44 (0) 1246 454455

NORTHEAST ASIA SALES OFFICE
Building No. 3, 2399 Zhaochong Highway, Qingpu District, Shanghai, China 201706
+86-21-60259766

INDIA SALES OFFICE
573, 3rd Floor, Main Road, Chirag, New Delhi – 110017, India
+91 984 1510958

WHAT WE OFFER



TRAINING

Concrete construction sites can be complicated and stressful locations. If you have a new operator or just want to brush up on some finer skills, we can dispatch one of our trained professionals to provide on-site service. Somero® can help you find ways to improve efficiencies, enhance job-site safety, and cut costs.



24/7 CUSTOMER SUPPORT

We have years of experience working with customers to solve even the toughest application or maintenance problems associated with Laser Screed® concrete leveling equipment. Every piece of Somero® equipment is designed and built to provide maximum productivity and operation economy throughout its working life.

Your Somero® Service Group can help you maintain that built-in value with a variety of services because we stand behind our equipment. That's why our expert help is available 24 hours a day, 7 days a week – so we'll be there when you need us.



SERVICE WARRANTIES

When you want peace of mind we can help with our extended warranty and service contracts. Get the best performance and productivity from your Somero® Equipment! Benefits of our service contracts include:

- > We perform all of the “non-routine” maintenance on the machine.
- > Repair small items immediately to avoid major breakdowns later.
- > Ensure your operators are fully trained.
- > Take inventory and suggest restock of any depleted emergency spare parts.



FINANCING OPTIONS

Somero® offers multiple opportunities for you to finance new or used equipment. It only takes a few minutes to fill out the applications and our friendly sales team will get in touch with you to discuss your options.



SMALL LINE

DON'T LET OUR SIZE FOOL YOU.

FOR YOUR SMALL COMMERCIAL, UPPER-DECK, AND RESIDENTIAL PROJECTS.

MINI SCREED™ C



Get superior productivity and flatness with the **Mini Screed™ C**. Designed for small commercial, upper deck, and residential projects – the Mini Screed™ C provides you and your customers with high quality, professionally produced floors at a fraction of the cost of conventional methods. With laser-controlled accuracy, this machine will screed to higher tolerances than traditional methods and works well with cement mixes of varying slumps.

FEATURES/BENEFITS:

- > Improved floor quality
- > Increased profitability
- > Column-Block Protection
- > Lightweight and easy-to-maneuver
- > Easy to set-up, break-down and clean
- > Fits easily into the bed of a pickup truck
- > CBSSR Laser Control System
- > Single & dual-slope capabilities
- > Auto-Leveling head
- > Compatible with the 3-D Profiler System®
- > Somero Quick GradeSet System™

**SPECIFICATIONS:**

WEIGHT	470 lbs / 213 kg
WIDTH	30.5" / 77.5 cm
HEIGHT	3' 7" / 1.1 m
LENGTH	6' 4" / 1.9 m
ENGINE	6 HP / 4.47 kW Subaru 4-Stroke, Air-Cooled
TIRES	High-float (standard) / Moto (optional)
SCREED HEAD WIDTH	6' 8" / 2.0 m

WHAT OUR CUSTOMERS SAY:

“Metcon uses Somero’s® Small Line equipment on nearly every flatwork pour. The improved flatness and production achieved by the Mini C or CopperHead® on grade or deck slab pours give them Most Valuable Equipment status.”

Glen Garber, *Metcon*

COPPERHEAD® XD™ 3.0



Cut your concrete to a finished grade, screed it flat, and vibrate it smooth in a single pass. With the self-propelled **CopperHead® XD™ 3.0** you get superior productivity, labor savings and improved levelness with this improved 4th generation walk-behind Laser Screed® machine. As with all Somero® models, the Copperhead® sets the grade automatically, allowing your crew to move quickly and efficiently. Ideal for slab-on-grade and upper decks applications; but improves your performance over chaired rebar or mesh, in-floor heat and freezer slabs, including ice rinks.

FEATURES/BENEFITS:

- > Improved floor quality
- > Increased profitability
- > Fewer worker injuries
- > Somero Quick GradeSet System™
- > Column-Block Protection
- > CBSSR Laser Control System
- > Remote grade adjustments
- > Lightweight and easy to maneuver
- > Easy to set-up, break-down, and transport
- > Screeds flat, single and dual slopes
- > Also compatible with the Somero 3-D Profiler System®

**SPECIFICATIONS:**

WEIGHT	850 lbs / 386 kg
WIDTH	36" / 91 cm
HEIGHT	40" / 1.1 m
LENGTH	9' / 2.7 m
ENGINE (STANDARD)	14 HP / 10.4 kW Subaru EX40
ENGINE (OPTIONAL)	Diesel Kohler KD440
TIRES (STANDARD)	29.4 PSI / 197 kPa
TIRES (OPTIONAL ATV)	Moto (standard) / High-float (optional)
SCREED HEAD WIDTH	10' / 3.1 m
SCREED HEAD WIDTH (OPTIONAL)	8' / 2.4 m

WHAT OUR CUSTOMERS SAY:

“With the Copperhead we use 3 fewer men, cut 1-1/2 hours off our placing time effectively eliminating all over-time and improve our floor quality. That’s a savings of over \$1,000 per day!”

– Jason Baiocco, *Precision Concrete Screeding*



S-485



With incredible pulling power and the OASIS control system, the **S-485** is a ride-on four-wheel drive model that can screed in any direction and is easy-to-operate. With the versatility to be utilized as a Laser Screed® machine or a Laser Controlled Rake, the S-485 provides simple, fast, and accurate grade results whether you are screeding concrete or prepping the subgrade.

FEATURES/BENEFITS:

- > Improved floor quality
- > Increased profitability
- > Lightweight and versatile
- > Screeds on elevated slabs or on grade
- > Provides better performance in difficult applications, including chaired rebar or mesh, ice rinks, in-floor heat and freezer slabs.
- > 4 wheel drive
- > Column-Block Protection
- > OASIS Laser Control System
- > Auto valve calibration for consistent, unsurpassed performance
- > Somero Quick GradeSet System™
- > Compatible with the 3-D Profiler System®

**SPECIFICATIONS:**

WEIGHT	1107 lbs / 502 kg
WIDTH	8' 4" / 2.5 m
HEIGHT	4' 2" / 1.3 m
LENGTH	9' / 2.7 m
ENGINE	20.8 HP / 15.5 kW gasoline Honda GX630
TIRES	Moto (standard) / High-float (optional)
SCREED HEAD WIDTH	8' / 2.4 m 6' 1" / 1.8 m Rake / Sub-Grade Head

S-840



If you want higher Floor Levelness numbers, the **S-840** will provide you with better performance than any other mechanical method and is one of the most versatile concrete machines available. The S-840 has three options for your convenience: a fully automated self-leveling screed head, a raking head, and a sub-grade head. The automated screed process increases profitability by providing fewer man hours per project, and its custom control system provides faster elevation and SLS response. The S-840 can screed up to 5,000 square feet on average per hour.

FEATURES/BENEFITS:

- > Improved floor quality
- > Increased profitability
- > Somero Quick GradeSet System™
- > Available with a Raking or Sub-Grade Head
- > Column-block protection
- > Live calibration for consistent, unsurpassed performance
- > Works well with slump as low as 3 ½" / 8.9 cm
- > Rotating Head Dollies optional
- > Compatible with the 3-D Profiler System®
- > On-Site training available
- > OASIS Laser Control System

**SPECIFICATIONS:**

WEIGHT	1,548 lbs / 702 kg
WIDTH	3' 6" / 1.1 m
LENGTH	9' 7" / 2.9 m
ENGINE (STANDARD)	20 ½ HP / 15 KW Subaru EH65
ENGINE (OPTIONAL)	Diesel 24.8 HP Kubata DH902
TIRES (STANDARD)	38 PSI / 262 kPa
TIRES (OPTIONAL ATV)	9.8 PSI / 67.6 kPa
SELF-PROPELLED	4-Wheel Drive w/ Hydraulic Motors
SCREED HEAD WIDTH	8' / 2.4 m or 6' / 1.8 m
RAKE/GRADING HEAD (OPTIONAL)	8' / 2.4 m or 6' / 1.8 m

WHAT OUR CUSTOMERS SAY:

“As a small company the S-840 was a big purchase for us, but a very satisfying and positive one. You might say you are too small a company to get one, but the reality is the smaller your company the higher percentage of your work force the S-840 will replace and so it still makes sense.

Also Somero® was wonderful to deal with making everything as easy as possible and giving us confidence that we will be looked after. They also referred us to lease companies of whom one has done multiple equipment deals for us now with excellent service. With the S-840 you don't only get a Laser Screed, you get Somero!”

– Warren Bauman, *Countryside Concrete*

S-940



The **S-940** provides unmatched versatility and simplicity with increased power and productivity! Available with a fully automated self-leveling screed head, raking/fine grade head, this powerful machine has fewer switches and an easy-access hinged console, making any job comfortable for your operator.

It has a foldable elevation beam that provides a narrower profile during transport with the added benefit of providing easy entry to jobsites. The off-set screed head provides less of an overlap per pass. With the option of a powerful diesel engine, this model is unstoppable.

FEATURES/BENEFITS:

- > Improved floor quality
- > Increased profitability
- > Somero Quick GradeSet System™
- > Auger Screed Head can screed on Chaired Mesh, Chaired Rebar, Heat Tubes, some slab-on-deck and more.
- > Raking/Fine Grade Head for raking concrete, finish grading or spreading material (sand, stone, etc.).
- > Auto valve calibration for consistent, unsurpassed performance
- > Rotating head dollies optional
- > Works well with slump as low as 3 ½" / 8.9 cm
- > On-Site training available
- > Compatible with the 3-D Profiler System®
- > OASIS Laser Control System
- > Column-Block Protection

**SPECIFICATIONS:**

WEIGHT	1653 lbs / 750 kg
WIDTH	4' 9" / 1.5 m
LENGTH	11' / 3.4 m
ENGINE (STANDARD)	22 HP Subaru EH65
ENGINE (OPTIONAL)	Diesel 24.8 HP Kubota DH902
TIRES (STANDARD)	38 PSI / 262 kPa
TIRES (OPTIONAL ATV)	9.8 PSI / 67.6 kPa
SELF-PROPELLED	4-Wheel Drive w/ Hydraulic Motors
SCREED HEAD WIDTH (STANDARD)	8' / 2.4 m
SCREED HEAD WIDTH (OPTIONAL)	10' / 3 m
RAKE/GRADING HEAD (OPTIONAL)	9' / 2.7 m



LARGE LINE

LET'S GET IT DONE.

FOR YOUR LARGE, COMMERCIAL, SLAB-ON-GRADE PROJECTS.

S-10A



With operator conveniences unmatched in the industry, the **S-10A** was engineered for productivity and convenience. Despite its compact size, the S-10A is highly productive, screeding 200 square feet per pass thanks to its 20' / 6 m telescopic boom and a patented, fully-automated, self-leveling, 10' screed head. Surprisingly light weight, the S-10A Laser Screed® model can be easily transported.

FEATURES/BENEFITS:

- > Improved floor quality
- > Increased profitability
- > Column-Block Protection (optional)
- > OASIS Laser Control System
- > Operator positioned in center of machine for optimum 360° visibility
- > Compatible with the 3-D Profiler System®
- > Somero Quick GradeSet System™

**SPECIFICATIONS:**

WEIGHT	7,500 lbs / 3,402 kg
WIDTH	6' 8" / 2.0 m
HEIGHT	6' 10" / 2.1 m
LENGTH	23' / 7.0 m (transport mode)
ENGINE	35 HP Diesel / 26 kW Kubota
SCREED HEAD WIDTH	10' / 3.0 m

OPTIONAL:

- Tool Box Storage Kit
- Pressure Washer Kit
- Laser options
- LED Light Kit
- Dual AXIS Angle Sensor
- Tire options

WHAT OUR CUSTOMERS SAY:

“My guys can do this pour by hand today, but they wouldn’t want to see another one like it for a week. With this machine, we could do it again tomorrow. This machine is perfect for getting into smaller buildings where the larger screed would not fit. It pulls a ton of concrete.”

– *Booker Foundations and Flatwork*

S-15R



The **S-15R** is a high-performance, sophisticated machine with great value. It has a patented fully integrated self-leveling head assembly which plows, levels, and consolidates in just a single automated pass. The plow rakes down high concrete filling in low spots and the Somero® Quick Pass feature rakes down excessively high concrete without manual intervention. The hydraulically driven auger cuts the surface to grade and displaces excess concrete to the side via a double flight auger and the offset head design. At the same time, the flip-down plow extension pushes concrete further past the auger discharge, minimizing overlaps.

Our 20' telescopic boom reaches out over the concrete allowing the operator to reach over chaired rebar and chaired mesh. Columns, pipes, box outs are no problem due to the ability to rotate around these obstacles while screeding. The powerful hydraulic system controls the elevation of the auger to maintain grade for a much smoother surface as compared to rigid mounting style machines, even with very low slump concrete! The S-15R Laser Screed® model can be easily transported on a flatbed truck or tag-behind trailer.

FEATURES/BENEFITS:

- > Improved floor quality
- > Increased profitability
- > Somero Quick GradeSet System™
- > OASIS Laser Control System
- > Column Block Protection
- > 360° Machine Rotation with 2-wheel, 4-Wheel and Crab Steering
- > LCD display screen with built in diagnostics
- > Compatible with the 3-D Profiler System®

SPECIFICATIONS:

WEIGHT	9,650 lbs / 4,377 kg with 10' / 3.0 m Screed Head
WIDTH	6' 6" / 2.0 m
HEIGHT	6' 9" / 2.1 m
LENGTH	24' 4" / 7.4 m with 10' / 3.0 m Screed Head (transport mode)
ENGINE	44.3 HP / 33 kW Kubota V1505 Turbo Diesel
SCREED HEAD WIDTH (STANDARD)	10' / 3.0 m
SCREED HEAD WIDTH (OPTIONAL)	8' / 2.4m

Multiple options available, contact sales for more information

WHAT OUR CUSTOMERS SAY:

“Tri State Pumping, Inc. purchased the S-15R Laser Screed® Machine at the World of Concrete in January, 2014 strictly for use as a rental machine. It has exceeded expectations of lowering labor expenses and delivering flatter floors. My customers demand the machine on their jobs to be able to perform on a higher level than their competition! It's a winner!!”

– Steve Gorman, *Tri State Pumping, Inc., Dothan, AL*



S-22E



Somero's **S-22E** is the most technologically advanced Laser Screed® model available in the world. It allows you to choose from several options to build your Laser Screed® Machine to meet your needs. This model offers 360° machine rotation, a 20' / 6 m boom reach, and a single-touch stabilizer control. The optional Roller is positioned at the bottom of the plow, which allows the cream to rise to the top while pushing down larger aggregates and fiber. This allows the operator to seal the concrete in a single pass, especially useful when dealing with very low slumps, large aggregate or fibers.

We provide several machine options to meet your needs, including: head size, roller plow, extra storage, engine, and the Somero Floor Levelness System®. The first technology of its kind, the **Somero Floor Levelness System®** monitors Laser Screed® machine performance and reports alert percentages of any issues. This helps keep operators and machines fine-tuned and ready for tough jobs.

FEATURES/BENEFITS:

- > Improved floor quality
- > Full color soft touch LCD display with integrated diagnosis
- > Somero Floor Levelness System® (optional)
- > Column-Block Protection
- > OASIS Laser Control System
- > 360° Machine Rotation with 2-wheel, 4-Wheel and Crab Steering
- > Somero Quick GradeSet System™
- > Hydraulic oil pre-heater
- > Heated seat, hand and foot areas
- > Automatic throttle
- > Automatic soft landing
- > Programmable Quick Pass
- > Compatible with the 3-D Profiler System®

SPECIFICATIONS:

WEIGHT	13,600 lbs / 6,169 kg
WIDTH	7' 2" / 2.2 m
HEIGHT	8' 3" / 2.5 m
LENGTH	27' 10" / 8.4 m (transport mode)
ENGINE (STANDARD)	74 HP / 55.0 kW Deutz Turbo Diesel, Tier 4i
ENGINE (OPTIONAL)	65 HP / 48.5 kW Cummins Diesel QSS 2.8, Tier 4 Final
SELF-PROPELLED	Standard
SCREED HEAD WIDTH	12' / 3.7 m (standard)
SCREED HEAD WIDTH	14' / 4.3 m (optional)

OPTIONAL:

- 12' / 3.6 m or 14' / 4.3 m Roller Plow
- Hydraulic Pressure Washer (3,000 PSI / 207 bar)
- Extra Lower-Frame Storage Compartment
- Powered head rotation on the end of the boom
- Tire options
- Spare parts kits

**WHAT OUR CUSTOMERS SAY:**

"The S-22 is so fluid and a lot easier to operate. Machine responds rapidly to every movement with no hesitation. IT'S THE BEST MACHINE I'VE RAN!"

— Jack Mills, *C & C Plumbing Services, Inc., Groveland, FL*

STS-11M



Disperse a wide variety of shake-on toppings with the **STS-11M** Topping Spreader. Its uniquely versatile design features a low dust loading technology with Inlet Hopper brushes, storage for up to twenty 50-lb. / 22.7 kg bags, and a compact machine size for easier transporting. The STS-11M Topping Spreader provides spreading accuracy that allows you to distribute shake-on toppings from fine materials to trap rock.

FEATURES/BENEFITS:

- > Increased profitability
- > Superior spreading accuracy
- > Easy-Loading
- > Improved operator visibility
- > Easy to maintain and service
- > Floor Levelness & Site Shape
- > On-Site training available
- > 2-Wheel, 4-Wheel, or Crab Steer

SPECIFICATIONS:

WEIGHT	9,000 lbs / 4,082 kg
WIDTH	7' 2" / 2.2 m
LENGTH	16' 3" / 4.9 m
ENGINE	35 HP / 26 KW Kubota Diesel
SELF-PROPELLED	Standard
SPREADER HEAD WIDTH	6' / 1.8m

WHAT OUR CUSTOMERS SAY:

“The STS-11M improved the productivity and quality of the concrete team reducing labor cost and workers fatigue. The optimized distribution of the hardener guaranteed a uniform and homogeneous layer. Besides the increase of productivity, the superior distribution of the aggregate increased our F numbers and reduced problems found with traditional methods. We are very pleased with Somero Enterprises® STS-11M Topping Spreader.”

Geremias Felipe Junior, *ALPHAPISO, Brazil*





SOFTWARE PACKAGES

YOU'RE GONNA LOVE THIS.

THE LATEST AND MOST POWERFUL ADVANCEMENTS IN CONCRETE. EVER.

3-D PROFILER SYSTEM



The Somero® **3-D Profiler System**® allows automatic, accurate, paving of contoured sites using Somero® Laser Screed® equipment. It's ideal for use on parking lots, loading docks and service areas. It's also used to “overlay” deteriorated parking lots and streets. Thanks to this system, multi-slope projects are now completely practical and cost-effective to achieve indoors or outdoors due to its use of a robotic total station which offers greater utilization and improved accuracy.

Not only is the system easy to learn and use, it is compatible with Somero® Laser Screed® machines from both our small and large product lines. The 3-D Profiler System® comes complete with all necessary components to get you profitably paving right away.

Concrete paving and overlays are a multi-billion dollar market and quickly gaining momentum. A great opportunity exists for Laser Screed® equipment owners to capitalize by expanding their services to 3-D grading and screeding.

Not using a Somero® grading system for your earthwork? That's okay. Share your 3-D Profiler System® to your grading equipment with the integration of your SiteShape®. It allows you to utilize the same profile for grading and screeding. It also increases your accuracy and yields between sub-grade work and screeding, **which means huge savings for you and your customers.**



FEATURES/BENEFITS:

- > Increased profitability
- > Automatic & accurate paving of contoured sites
- > Easy to learn & utilize
- > Trimble Business Center Integration
- > Compatible with most Somero® Laser Screed® models
- > Share with your motor grader, dozer, skid-steer or other grading machines

WHAT OUR CUSTOMERS SAY:

“I love running the toy, as I call it, our 3-D Profiler is just as much fun to run today as it was when we first got it. I also love trying to stump it; but no matter what curves or bumps lay ahead, it automatically adjusts and finishes them perfectly.”

– James Coy, President of *James K Coy Construction Inc.*

SITESHAPETM



Ever wish that you could have the simplicity of the **Somero® 3-D Profiler System®** for your motor grader? Now it's possible with SiteShape™, which takes the same field-proven technology and adapts it to simplify your fine-grading applications.

This system allows for grade shaping automatically using your motor grader, dozer, or other grading machine to meet the demands of real three-dimensional grade shaping.

Ideal for use on parking lots, loading dock areas, service ramps, and driveways – it can also be used on roadways, runways, taxiways, or any multi-sloped surface. Slope and elevation changes are now simple, practical, and cost-effective to achieve. The SiteShape™ System is compatible with most makes and models of grade cutting machines.

WHAT OUR CUSTOMERS SAY:

“Somero’s equipment has allowed our company to compete on larger projects, which helped us, and other divisions of our company grow. I can definitely say the investment was a good one.”

Len Swederski, President of **Swederski Concrete Construction**

SOMERO® FLOOR LEVELNESS SYSTEM®

Is your Grade Control System running at its best? Are you having issues with F numbers but don't know where to start? Are you interested in becoming a more experienced operator?

Somero Enterprises is proud to announce the **Somero Floor Levelness System®**. The first technology of its kind, the System monitors your Laser Screed® machine and operator performance, then reports alert percentages of issues. What does this mean? **You can now receive instant feedback on the job if screed performance is decreasing.**

The system is capable of detecting small changes which are typically not perceptible to the operator, making the system ideal for detecting issues with minimal operator effort and allowing them to adjust accordingly.



FEATURES/BENEFITS:

- > **TRAINING TOOL FOR NEW AND EXPERIENCED OPERATORS:** New operators can learn proper techniques for stabilizer adjustment, head touchdowns, and boom speed. Continuous feedback is provided reinforcing concepts and alerting the operator
- > **MAXIMIZE LASER SCREED PERFORMANCE:** Experienced operators can fine tune their techniques and know when to adjust valve speeds to optimize the screeding performance for that day's productivity.
- > **HELP ISOLATE ISSUES WITH FLOOR QUALITY:** Floor quality can be challenging to understand because the floor is measured after all aspects of the pour are complete. Some processes before and after screeding can improve floor quality while others can lower it. The advantage of the Floor Levelness System® is that if the scoring system remains high then the screed is working well. Thus the question of what else has changed can be asked. This helps isolate changes from pour-to-pour to better understand what impacts floor quality. The entire day's data can be downloaded to generate a summary report or a detailed analysis.





REMANUFACTURED

YOU'RE WELCOME.

FACTORY-CERTIFIED AND LABOR-SAVING TECHNOLOGY AT AN AFFORDABLE PRICE.

REMANUFACTURED

Somero Enterprises, Inc.®, the world-wide leader in concrete placing and leveling equipment, is pleased to offer a selection of **Factory Certified Remanufactured Equipment**. If a new piece of equipment is just a bit out of reach, why not consider remanufactured? You will receive Somero's labor saving technology at an affordable price and have the peace of mind knowing that it has been completely remanufactured. All Factory Certified Remanufactured Equipment comes with a one-year warranty, training, C.E. certification.

All large-line remanufactured equipment, including the S-240, SXP®, and S-160 models will be completely upgraded to Somero's technologically advanced OASIS Laser Control System.

To begin achieving higher quality floors that Somero is known for, you can view our current inventory of remanufactured equipment on our website at Somero.com or contact Somero Inside Sales at +1-239-210-6519.



PARTS & ACCESSORIES

**JUST A LITTLE SOMETHING
YOU MIGHT NEED.**

CONTACT US

**TO PLACE YOUR ORDER TODAY OR TO SPEAK TO A PARTS SPECIALIST
REGARDING ANY OF THE COMPONENTS LISTED IN THIS CATALOG**

PLEASE CALL:

USA: +1 (906) 482-7252, Option 4
8:30 – 5:00 PM Eastern Standard Time
Email: Support@Somero.com

UK: +44 (0)1246 454455
9:00 – 5:00 PM GMT
UKService@Somero.com

China: +86 2160259766
9:00 – 5:00 PM CST
Email: china_cs@Somero.com



**WE ARE PASSIONATE ABOUT
YOUR SUCCESS!**

OASIS UPGRADE

Somero® proprietary software/hydraulic system integrated with state of the art controller/sensing hardware to provide cutting edge control performance

Upgrades available for the following models with the listed control systems:

- All SXP's (Converts from GCS21)
- All S240's (Converts from PA and GCS21)
- All S160's (Converts from PA and GCS21)
- All S100's (Converts from PA and GCS21)

System Features/Options

- Somero® Designed Control System
- Enhanced Screeding Accuracy
- Operator Friendly
- Current Across All New Screed Models
- Highly Configurable
- Increased Dependability
- 3D Compatible
- Software Upgradeable
- Reduced System Components

Installed in-house & on-site
(Pricing Varies by Installation Method)



Machine Components: Controller, Operator Display, Laser Receivers, Dual Axis Angle Sensor, Hydraulic Control Valve & Remote Switch Box (Except SXP)

MSC Gold & Silver Emergency Support Kits

PREPARATION IS KEY:

Contained in a durable waterproof carry case, the Emergency Support Kits have been carefully designed to assist easy fix solutions provided by Somero® Engineers when pressure is at its greatest. Since introduction, the kits have proved invaluable in avoiding machine downtime, unplanned stop ends and pour cancellations, providing a cheap insurance and peace of mind to our customers.



SILVER KIT

700501309

Rugged Waterproof Carry Case with foam inserts, Control Box, Receiver Coil Cord, Clamp Assembly, Air Filter, Isolators, Linear Actuator, Hex Bit, Velcro, Plow Links, Plow Wings & Hydraulic Filter Cartridge.

GOLD KIT

700501310

Rugged Waterproof Carry Case with foam inserts, Control Box, Receiver Coil Cord, Clamp Assembly, Air-Filter, Isolators, Hex Bit, Velcro, Various Switches and covers, Relays, Linear Actuator, Spare Receiver, Drive Seals and Spark Plug.



MINI SCREED C™

Laser Gear Accessories

SSR Receiver	711301054
CBSSR Control Box	710101233
SSR Coil Cord	710601119

Head Accessories

Head Lift Actuator	710101240
Head Level Actuator	710101466
Linear Actuator with Hood	710101465
PQ Level Sensor	710101143
Limit Switch Assembly	710101123
Electric Vibrator Motor	710101238
Vibrator Plate	700301297

Engine Accessories

6HP Air Filter	740501028
Spark Plug	770401058



SSR Receiver



CBSSR Control Box



PQ Sensor



Head Lift Actuator



Linear Actuator with Hood



MINI SCREED C™

Wheels and Accessories

ATV Tire/Rim Assembly

Left	700801048
Right.....	700801047
Motorcycle Wheel Assembly.....	700801053
Tire MX 14".....	700801040
Tube MX 14".....	700801041
Wheel MX 14"	720505059
Flanged Wheel Extension.....	720701087
Wheel Guard Seal Outer, 5 ft for 2 wheels	740901004
Wheel Guard Seal Inner, 1.25 ft for 2 wheels	740901005

Jobsite Accessories

Lift Harness 28".....	740801545
Lift Harness 48".....	740801546
Mini Screed Rake.....	741101023
Pump Sprayer.....	740801737



Wheel Guard Seal Inner



Wheel Guard Seal Outer



Tube MX 14"



MX Wheel Assembly

XD3 Gold & Silver Emergency Support Kits**PREPARATION IS KEY:**

Contained in a durable waterproof carry case, the Emergency Support Kits have been carefully designed to assist easy fix solutions provided by Somero® Engineers when pressure is at it's greatest. Since introduction the kits have proved invaluable in avoiding machine downtime, unplanned stop ends and pour cancellations, providing a cheap insurance and peace of mind to our customers.

**SILVER KIT****700501317**

Rugged Waterproof Carry Case with foam inserts, CBSSR, Control Box, Linear Actuator w/ Hood, Limit Switch Assy, Vibrator Motor, Various Hydraulic Hoses, Vibrator Bearings, Neutral Safety Switch, Various Relays, Actuator Cord, Harness to Disconnect, Actuator Cord, Actuator to Disconnect, Coil Cord, SSR, Various Switches, E Stop, Bushing, Liftarm Mount, Vibrator Isolators, Clamp Assemblies, Knob, SSR Mast Clamp, Velcro, Dual Lock, 1" Hydraulic Filter Element, Engine Air Filter, Spark Plug.

GOLD KIT**700501318**

Rugged Waterproof Carry Case with foam inserts, CBSSR, Control Box, Linear Actuator w/ Hood, Limit Switch Assy, Vibrator motor, Various Hydraulic Hoses, Vibrator Bearings, Neutral Safety Switch, Various Relays, Actuator Cord, Harness to Disconnect, Actuator Cord, Actuator to Disconnect, Coil Cord, SSR, Various Switches, E Stop, Bushing, Liftarm Mount, Vibrator Isolators, Clamp Assemblies, Knob, SSR mast clamp, Velcro, Dual Lock, 1" wide, Hydraulic Filter Element, Engine Air Filter, Spark Plug, PQ Level Sensor Assy, Spare Receiver.

**COPPERHEAD® XD3****Laser Gear Accessories**

SSR Receiver	711301054
CBSSR Control Box	710101233
PQ Level Sensor	710101143
SSR Coil Cord	710601119

Electrical Accessories

Battery.....	710401133
Limit Switch Assembly.....	710101123
Relay, 50 Amp (Power/Start)	20901
MicroRelay, (SideLock/TrackAssist)	710401139
Voltage Regulator.....	710401170

Hydraulic Accessories

Hydraulic Filter.....	750701073
Side Lock Cylinder	750101026
Head Lift Cylinder.....	750101050
Kick Stand Cylinder	750101056
Hydraulic Pump.....	750901005



PQ Sensor



Linear Actuator with Hood



CBSSR Control Box



SSR Receiver



Relay 50 Amp



Vibrator Motor



Vibrator Shaft



Vibrator Bearings



Vibrator Isolator

COPPERHEAD® XD3

Head Accessories

Vibrator Motor	750801042
Vibrator Shaft Weldment	720601774
Vibrator Bearing 1" 2 Bolt	20133
Vibrator Bearing 2 Bolt SFT-12T	740101044
Vibrator Isolator	740801413
Vibrator Beam	700601066
Vibrator Mount Plate	720503300
Head Weldment Support	720601736
Linear Actuator with Hood	710101465
Actuator Cord Disconnect to Harness	710601104
Actuator Cord Disconnect to Actuator	710601105

Wheels and Accessories

MX Wheel Assembly	700801016
MX Tire only	700801011
MX Tube only	700801010
MX Rim only	720506821
ATV Tire Assembly	
Left	700801042
Right	700801043
ATV Rim only	720601626
ATV Tire only	740801313
Flanged Wheel Extension	720701087
Wheel Guard Seal Outer, 5ft for 2 wheels ..	740901004
Wheel Guard Seal Inner, 2.5 for 2 wheels ..	740901005

Engine Accessories

13HP Air Filter EH41 Engine	740501011
14HP Air Filter EX40 Engine	740501038



ATV Tire Only



MX Tire Only



Wheel Guard Seal Inner



Wheel Guard Seal Outer

S-485 Gold & Silver Emergency Support Kits

PREPARATION IS KEY:

Contained in a durable waterproof carry case, the Emergency Support Kits have been carefully designed to assist easy fix solutions provided by Somero® Engineers when pressure is at it's greatest. Since introduction, the kits have proved invaluable in avoiding machine downtime, unplanned stop ends and pour cancellations, providing a cheap insurance and peace of mind to our customers.



SILVER KIT

700501306

Rugged Waterproof Carry Case with foam inserts, Various Hydraulic Hoses, Grease Fittings, Spare Joystick, Deadman Switch, Vibrator Motor, Estop, Bushings, Bearings, Hydraulic Filter, Engine Air Filter.

GOLD KIT

700501304

Rugged Waterproof Carry Case with foam inserts, Various Hydraulic Hoses, Grease Fittings, Spare Joystick, Deadman Switch, Vibrator Motor, Estop, Bushings, Bearings, Hydraulic Filter, Engine Air, Oil & Fuel Filters, Spark Plug., Extra Hydraulic Hoses, Pressure Gauge, Spare Receiver, Electrical Relay, & Inner and Outer Drive Hub Seals.



S-485

Laser Gear Accessories

AS212-s Dual Axis Sensor	711301068
SSR2 Receiver	711301072
SSR Coil Cord	710601119

Electrical Accessories

Dash Display	710101486
Paddle Joystick	710101297
Timed Raise Lower Switch	710101299
E-Stop	711601068
40/30 Amp Relay	710401336
Deadman Operator Presence Switch	710101298

Engine Accessories

Fuel Filter	770401101
Oil Filter	770401102
Air Filter	710101299
Spark Plug	770401104



SSR2 Receiver



Paddle Joystick



E-Stop



Dash Display



S-485

Head Accessories

Raking/Dirt Head.....	0s485Rake
3D Raking/Dirt Head	0s485rake3D
Electric Vibrator Motor.....	710101348
Weldment Head Pin	720602978
Vibrator Plate Assembly	700301357
Vibrator Motor Mount Plate.....	720507564
Vibrator Linkage Assembly.....	700601138
Vibrator Isolator	740801413

Hydraulic Accessories

Hydraulic Pump.....	750901037
Elevation Cylinder	750101095
SLS Cylinder.....	750101096

S-840 Gold & Silver Emergency Support Kits

PREPARATION IS KEY:

Contained in a durable waterproof carry case, the Emergency Support Kits have been carefully designed to assist easy fix solutions provided by Somero® Engineers when pressure is at it's greatest. Since introduction the kits have proved invaluable in avoiding machine downtime, unplanned stop ends and pour cancellations, providing a cheap insurance and peace of mind to our customers.



SILVER KIT

700501282

Rugged Waterproof Carry Case with foam inserts, Various Hydraulic Hoses, Spare Joystick Assembly, Various dashboard switches, Vibrator Motor, Auger Motor, Valve, SLS Control, Hydraulic Filter, Oil Filter, Air Filter.

GOLD KIT

700501308

Rugged Waterproof Carry Case with foam inserts, Various Hydraulic Hoses, Spare Joystick, Various dashboard switches, Vibrator Motor, Auger Motor, Valve SLS Control, Hydraulic Filter, Oil Filter, Air Filter, Spare Switch Covers, Spare Laser Receiver, Additional Switches, Timed Lower/Raise Switch, Head Pins, Auger Bearings, Auger Guards, Compression Springs, Threaded Rod, Inline Fuel Filter, Cotter Pin, Vibrator Isolator Mounts, Split Rings, Grease Fittings, Drive Motor Seals (inner & outer), Head lift Valve, Spark Plug, Pressure Gauge, Hydraulic Fittings, Cotter Pin, Vibrator Motor Key.



S-840

Laser Gear Accessories

SSR2 Receiver	711301072
SSR Coil Cord	710601119
AS212-S Dual Axis Sensor	711301068
Dash Display	710401319

Electrical Accessories

Paddle Joystick	710101297
Timed Raise Lower Switch	710101299
E-Stop	711601067
Micro Relay - Vib/Propel/Power	710401139
Deadman Operator Presence Switch	710101298
Voltage Regulator	710401241

Engine Accessories

Inline Fuel Filter	740501037
Oil Filter	770401023
Air Filter	770401022
Spark Plug	770401076



Electric Vibrator Motor



SSR2 Receiver



Paddle Joystick



AS212-S Dual Axis Sensor



Air Filter



S-840

Head Accessories

8ft Auger Head Assembly	Oshead840-8
Dirt Head Assembly	Os840dirt
Dirt Head with 3D X Slope Sensor	Os840dirt3d
8ft Double Flight Auger	720602787
Auger Motor	750801052
Auger Bearings	740101090
Auger Bearing Guards	T1145
Compression Springs	20959
Electric Vibrator Motor	710101348
Vibrator Plate	700301357
Vibrator Motor Mount Plate	720507564
Dolly Wheel Head Rotate Kit	700301425
Vibrator Linkage Assembly	700601138
Auger Weldment Plow Mount	720602557
Head Pin D Handle	720602640

Hydraulic Accessories

Hydraulic Filter	750701073
SLS Cylinder	750101070
Pivot Elevation Cylinder	750101079
Fixed Elevation Cylinder	750101078
Hydraulic Pump	750901015



Auger Bearing



Auger Guard



Compression Spring



SLS Cylinder



Hydraulic Filter



Auger Motor



8ft Auger Head Assembly



S-840

Wheels and Accessories

Dual Wheel Kit.....	700301395
MX Wheel Assembly.....	700801055
MX Tire only.....	700801011
MX Tube only.....	700801010
MX Rim only.....	720601478
ATV Tire Assembly	
Left.....	700801042
Right.....	700801043
ATV Rim only.....	720601626
ATV Tire only.....	740801313
Flanged Wheel Extension.....	720701087
Wheel Guard Seal Outer, 5ft for 2 wheels.....	740901004
Wheel Guard Seal Inner, 2.5ft for 2 wheels.....	740901005



S-840 Dual Wheel Kit

The Benefits

Weight Distribution (with 200lb operator)

- Base Machine, 1710lbs total: 1290 lbs on front wheels (645 lbs per tire)
420 lbs on rear wheels (210 lbs per tire)
- Machine w/ Kit, 1924lbs total: 1343 lbs on front wheels (336 lbs per tire)
581 lbs on rear wheels (291 lbs per tire)

Pulling Power (with 200lb operator)

- Base Machine: 920 lbs
- Machine with Kit: 1120 lbs which is a 22% increase



S-940

Laser Gear Accessories

SSR2 Receiver	711301072
SSR/SSR2 Receiver Cable.....	710601119
AS212-S Dual Axis Sensor	711301068
Dash Display	710101528

Electrical Accessories

Paddle Joystick.....	710101297
Timed Raise Lower Switch.....	710101522
E-Stop	711601067
Relay, Picker SPDT Cube.....	710401336
Switch	710101521
Voltage Regulator.....	710401241

Engine Accessories

Inline Fuel Filter	740501037
Oil Filter	770401023
Air Filter	770401022
Spark Plug.....	770401076

Hydraulic Accessories

Hydraulic Filter.....	750701073
SLS Cylinder	750101070
Pivot Elevation Cylinder.....	750101079
Fixed Elevation Cylinder	750101078
Hydraulic Pump.....	750901015

Head Accessories

10ft Double Flight Auger	720602759
8ft Double Flight Auger	720602787
Auger Motor.....	750801052
Auger Bearings.....	740101090
Auger Bearing Guards	T1145
Compression Springs	20959
Vibrator Motor	750801042
Vibrator Drive Assy Centaflex	700301549
Vibrator Motor Mount Plate.....	720507564
Dolly Wheel Head Rotate Kit	700501364
Weldment Isolator & Link Floating Vib	720603142
Assembly, Four Bar Linkage Vibrator.....	700601138
Weldment, D-Pin Head Assembly.....	720603160



AS212-S Dual Axis Sensor



E-Stop



Paddle Joystick

S-940 Gold & Silver Emergency Support Kits

PREPARATION IS KEY:

Contained in a durable waterproof carry case, the Emergency Support Kits have been carefully designed to assist easy fix solutions provided by Somero® Engineers when pressure is at it's greatest. Since introduction the kits have proved invaluable in avoiding machine downtime, unplanned stop ends and pour cancellations, providing cheap insurance and peace of mind to our customers. Emergency Support Kits are available to suit all budgets with our Gold and Silver Editions.

SILVER KIT

Part Number: 700501360

740801669	Heavy Duty Case
20356	Grease Fitting, 1/4-28, 90 Deg.
20363	Grease Fitting, Straight, 1/4-28 Taper
710101297	Paddle Joystick Assy OEM
710101521	Switch Assy, Operator Presence, S-940
710101522	Switch Assy, Timed Raise/Lower,S-940
710401241	Voltage Regulator, Robin 20.5HP,30A, HiTempSolder
710401336	Relay, Picker SPDT Cube 12VDC 40/30 Amp
710601119	Coil Cord, SSR/SSR2
711001026	Actuator, Rocker Switch, Rubber Carling Contura II
711601067	E-Stop, Compact NO/NC 40 mm Twist Release
740101044	Bearing, 2-Bolt, SFT-12T, XD
740101090	Bearing, Auger 1 7/16ID Contact Seal/Zerk@45 Deg
740801665	Bushing, Flanged, 1/2" ID, 3/4" OD, Lenth 1/2"
740801834	Bushing, Flanged 1/2 ID x 3/4" OD x 5/8 L
750701073	Filter Element, MP Filtri, MF0203A10HB
750801042	Vibrator motor, .067 CIR, 7/16" key shaft, XD
750801052	Auger Motor, SXP, SXP, S-22E, S-840, S15R
770401022	Air Filter Element 18hp Robin 263-32610-A1
770401023	Oil Filter, Robin 18.5hp & 20.5 Eng. 248-65801-10
770401076	Spark Plug NGK:BPR5ES for Robin 20.5hp EH650
20004-068	Hyd Hose 1/4 X 68
20006-095	Hyd Hose 3/8 X 95
20008-060	Hyd Hose 1/2 x 60"
20010-080	Hyd. Hose 5/8" x 80" 3000psi

GOLD KIT

Part Number: 700501361

740801669	Heavy Duty Carry Case
20356	Grease Fitting, 1/4-28, 90 Deg.
20363	Grease Fitting, Straight, 1/4-28 Taper
710101297	Paddle Joystick Assy OEM
710101521	Switch Assy, Operator Presence, S-940
710101522	Switch Assy, Timed Raise/Lower,S-940
710401241	Voltage Regulator, Robin 20.5HP,30A,
710401336	Relay, Picker SPDT Cube 12VDC 40/30 Amp
710601119	Coil Cord, SSR/SSR2
710601234	Cable, AS212-S, S-940
711001026	Actuator, Rocker Switch, Rubber Carling Contura II
711601067	E-Stop, Compact NO/NC 40 mm Twist Release
740101044	Bearing, 2-Bolt, SFT-12T, XD
740101090	Bearing, Auger 1 7/16ID
740404038	Threaded Rod, 5/16 - 24x2", 95412A609
740501037	Fuel Filter Inline Bosch 20 Micron
740801331	Cotter Pin, .125 Wire, Double Loop
740801413	Isolator, ext vib, Tech Product 51303, XD 2.0
740801665	Bushing, Flanged, 1/2" ID, 3/4" OD, Lenth 1/2"
740801834	Bushing, Flanged 1/2 ID x 3/4" OD x 5/8 L
740801732	Key Vibrator Motor 1/8 x 1/8 x 3/4"
740801794	Grease Fitting, 1/8"BSPP
740901004	Seal, wheel drive guard, McMaster
740901005	Edge seal, wheel dr grd, McMaster
750701073	Filter Element, MP Filtri, MF0203A10HB
750801042	Vibrator motor, .067 CIR, 7/16" key shaft, XD



S-940 GOLD & SILVER KITS

750801052	Auger Motor, SXP, SXP, S-22E, S-840, S15R
770401022	Air Filter Element 18hp Robin 263-32610-A1
770401023	Oil Filter, Robin 18.5hp & 20.5 Eng. 248-65801-10
770401076 S	park Plug NGK:BPR5ES for Robin 20.5hp EH650
T1145	GUARD, AUGER BEARING SEAL,
20004-035	HYD. HOSE 1/4 X 35
20004-068	HYD. HOSE 1/4 X 68
20006-095	HYD. HOSE 3/8 X 95
20008-060	Hyd Hose 1/2 x 60"
20010-080	Hyd. Hose 5/8" x 80"3000psi
20009	PRESSURE GAGE, 0-5,000 PSI, 2-1/2" PANEL MOUNT
20064-0404	HYD FTG ADAPTER, 4 M JIC TO 4 F NPT
20959	COMPRESSION SPRING,AUGER BEARING GUARD
20468	KEY, 1/4" SQ. X 1" LONG
711301072	SSR2 Laser Receiver w/Case
711601034	Rocker Switch, VJD1 DPDT Carling w/ I.D. Decal
711601035	Rocker Switch, VLD1 DPDT Carling w/ I.D. Decal
720603160	Weldment, D-pin Head Assembly, S-840

S-15R Gold & Silver Emergency Support Kits**PREPARATION IS KEY:**

Contained in a durable waterproof carry case, the Emergency Support Kits have been carefully designed to assist easy fix solutions provided by Somero® Engineer when pressure is at it's greatest. Since introduction, the kits have proved invaluable in avoiding machine downtime, unplanned stop ends and pour cancellations, providing a cheap insurance and peace of mind to our customers.

**SILVER KIT****700501323**

Rugged Waterproof Carry Case with Foam Inserts, Hitch Pin Cotter, Vibrator Motor, Vibrator Key, Paddle Joystick, Deadman Switch Assy Operator Presence, Thumb Switch Assy Auto-Raise, Timed Lower, SSR Coil Cord, Angle Sensor Cable, Various Switches and Covers, E-Stop, Auger Bearings, Clamp Assembly, Fan Belt, Kubota V1505, Element - Return Filter, Air Cleaner Element, Outer, Kubota V1505, Inner Air Cleaner, Oil Filter, Fuel Filter, Fuel Filter, Hydraulic Filter, Head Lift Valve, Auger Motor.

GOLD KIT**700501324**

Rugged Waterproof Carry Case with foam inserts, Hitch Pin Cotter, Vibrator Motor, Vibrator Key, Paddle Joystick, Deadman Switch Assy Operator Presence, Thumb Switch Assy Auto-Raise, Timed Lower, SSR Coil Cord, Angle Sensor Cable, Various Switches and Covers, E-Stop, Auger Bearings, Clamp Assembly, Fan Belt, Kubota V1505, Element - Return Filter, S-15M, Air Cleaner Element, Outer, Kubota V1505, Inner Air Cleaner, Oil Filter, Fuel Filter, Fuel Filter, Hydraulic Filter, Head Lift Valve, Auger Motor, Auger Bearing Guards, Spare Receiver.

**S-15R****Head Accessories**

8ft Double Flight Auger	720602787
10ft Double Flight Auger	720602759
Auger Bearings.....	740101090
Auger Bearing Guards	T1145
Compression Springs	20959
Vibrator Motor	20192
Vibrator Beam	720504728
Shaft Motor End	720508679
Shaft Middle Pods	720508680
Shaft End Pods.....	720508827
Rubber Mounts.....	20377
Auger Motor.....	750801052
Vibrator Deam 10ft Top Mount Shafts	720511118

Hydraulic Accessories

Hydraulic Filter.....	750701073
SLS Cylinder	750101070
Fixed Elevation Cylinder	750101078
Pivot Elevation Cylinder.....	750101079
Hydraulic Pump.....	750901033
Stabilizer Cylinder	750101086
Shaft, Transfer Remote Motor Top	720511161
Shaft, Transfer Remote Motor Front	720509818



Hydraulic Filter

SLS Cylinder

Auger Motor

Auger Bearing

Auger Guard

Compression Spring



S-15R

Laser Gear Accessories

SSR2 Receiver	711301072
SSR Receiver Cable	710601119
AS212-S Dual Axis Sensor	711301068

Electrical Accessories

Dash Display	710101500
Paddle Joystick	710101297
Timed Raise Lower Switch	710101299
Deadman Operator Presence Switch	710101298
E-Stop	711601068

Engine Accessories

Air Filter Outer	750401055
Air Filter Inner	750401056
Oil Filter	750401057
Fuel Filter Spin On	750401058
Fuel Filter Inline	750401059
Fan Belt	740801705



SSR2 Receiver



Paddle Joystick



E-Stop



AS212-S Dual Axis Sensor



STS-11M Gold & Silver Emergency Support Kits PREPARATION IS KEY:

Contained in a durable waterproof carry case, the Emergency Support Kits have been carefully designed to assist easy fix solutions provided by Somero® Engineers when pressure is at it's greatest. Since introduction the kits have proved invaluable in avoiding machine downtime, unplanned stop ends and pour cancellations, providing a cheap insurance and peace of mind to our customers.

SILVER KIT

700501311

Joystick, Deadman Switch, Auto Spread Switch, Relays, Various Electrical

GOLD KIT

700501324

700501312

Joystick, Deadman Switch, Auto Spread Switch, Relays, Various Electrical Switches and Covers, Boom Potentiometer, Fan Belt, Oil Filter, Air Filter, Fuel Filter, Inline Fuel Filter, Return Filter, Various Cartridges, Bearings and Fuel Pump.

STS-11M

Electrical Accessories

Paddle Joystick.....	710101297
Deadman Operator Presence Switch	710101298
Timed Raise Lower Switch.....	710101299
E-Stop	711601068
Relay.....	20901

Engine Accessories

Air Filter Outer.....	750401055
Air Filter Inner	750401056
Oil Filter	750401057
Fuel Filter Spin On	750401058
Fuel FilterInline	750401059
Fuel Pump	710401332
Fan Belt.....	740801705

Head Accessories

Drum Motor	50801010
Drum Weldment.....	13204
Drum Weldment Studs.....	20894
Brush Rear Head Assembly	720508073
Brush Side Head Assembly.....	720508069



Air Filter Inner



Air Filter Outer



Oil Filter



Paddle Joystick



E-Stop

S-22E Gold & Silver Emergency Support Kits**PREPARATION IS KEY:**

Contained in a durable waterproof carry case, the Emergency Support Kits have been carefully designed to assist easy fix solutions provided by Somero® Engineers when pressure is at it's greatest. Since introduction the kits have proved invaluable in avoiding machine downtime, unplanned stop ends and pour cancellations, providing a cheap insurance and peace of mind to our customers.

**SILVER KIT****700501313**

Rugged Waterproof Carry Case with foam inserts, Auger Bearing Guard, Compression Springs, Auger Bearings, Oil Filter, Multi-Meter, Hub Caps, Hydraulic Fittings Kit w/ Fuses, Column Clamp, Tripod Kit, Receiver Adapter Head Harness, Auxiliary Cable Emergency By-Pass, By-Pass Adapter for Boom Cable Head Side, 2 Bolt Bearing, Spare Hose Kit S-22E.

GOLD KIT**700501324**

Rugged Waterproof Carry Case with Foam Inserts, Auger Bearing Guard, Compression Springs, Auger Bearings, Oil Filter, Multi-Meter, Hub Caps, Hydraulic Fittings Kit w/ Fuses, Column Clamp, Tripod Kit, Receiver Adapter Head Harness, Auxiliary cable Emergency By-Pass, By-Pass Adapter for Boom Cable Head Side, 2 Bolt Bearing, Spare Hose Kit S-22E, Laser Receiver, LR212—s, Straight end coil cable, Steer Sensor Cable, Stabilizer Directional Cartridge, Stabilizer Counterbalance, Fuel Filter, Alternator Belt, Air Filter Primary, Air Filter Secondary, Centaflex Element, Rocker Switches and Covers, Actuator Removal Tool.

**S-22E****Head Accessories**

12ft Double Flight Auger	720601691
14ft Double Flight Auger	720601909
AugerBearing	20505
Auger Bearing Guard	11769
Compression Spring	20448
Vibrator Bearing (John Deere without Vib Shoe)	740101044
Vibrator Bearing (Deutz with Vib Shoe)	740101091
Centaflex Element	24414
Rubber Mounts	20377
Auger Motor	750801052
Vibrator Motor	20192

Roller Plow

RollMotor	750801072
12ft Roller Plow Right	720602736
12ft Roller Plow Left	720602737
12ft Rubber Wiper Roller Plow	760401007
14ft Roller Plow Right	720602800
14ft Roller Plow Left	720602801
14ft Rubber Wiper Roller Plow	760401008
RollerPlowBearing	740101082
Roller Plow Bearing Guard	T1145
Compression Springs	20959
MiddleBearingGuard	740801745



Centaflex Element



Vibrator Bearing



Auger Bearing



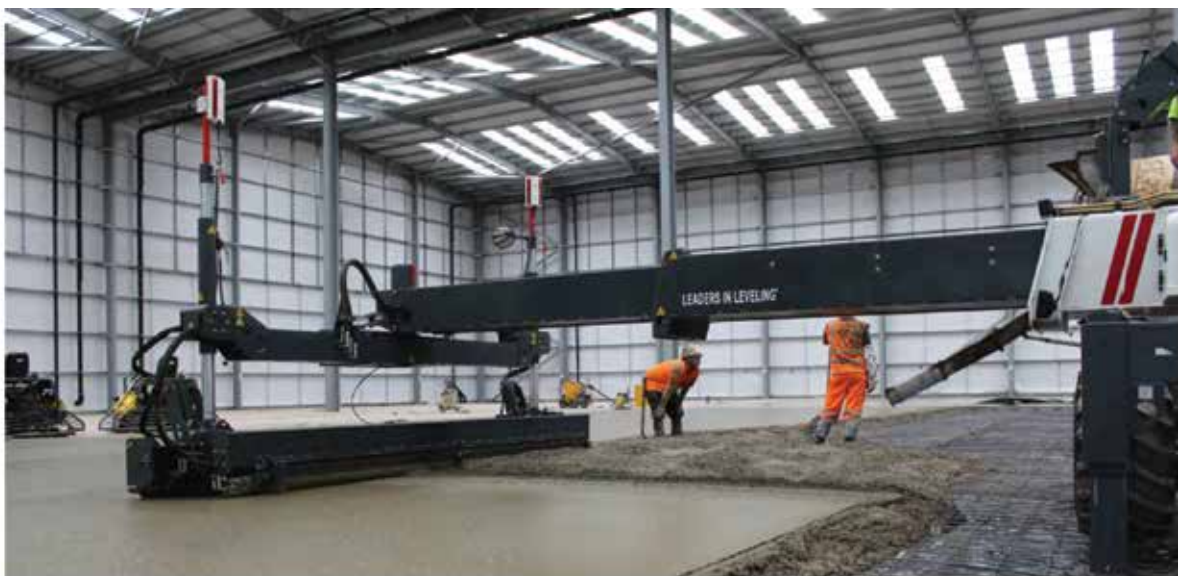
Auger Guard



Roller Plow Auger Guard



Compression Spring



S-22E

Laser Gear Accessories

AS212-S Dual Axis Sensor	711301068
LR212-S Receiver	711301078
LR212-S Receiver Cable	710601127

Electrical Accessories

Dash Display	710101425
Left or Right Hand Joystick	710401333
E-Stop	711601068
Head Light Assembly	20714-assy

Hydraulic Accessories

Hydraulic High Pressure Filter	750701189
Hydraulic Return Filter	750701297
SLS Cylinder	750101070
Pivot Elevation Cylinder	750101091
Hydraulic Pump	750901014
Stabilizer Cylinder	11630-002



Dash Display



SLS Cylinder



E-Stop



Joystick



LR212-S



AS212-S Dual Axis Sensor



S-22E JOHN DEERE SERIAL 36001 - 36061

Engine Accessories

Air Filter Primary	770201021
Air Filter Secondary	770201022
Oil Filter	770201020
Fuel Filter	770201018
Alternator Belt.....	770201026
Catalytic Muffler.....	740801634



John Deere 4024 Engine

S-22E DEUTZ SERIAL 36062 - PRESENT

Engine Accessories

Air Filter Primary	770201021
Air Filter Secondary	770201022
Oil Filter	20839
Fuel Filter	770201036
Alternator Belt.....	770201038
Catalytic Muffler.....	740801795



Deutz Tier 4 Interim Engine

S-22E CUMMINS CUSTOMER OPTION

Engine Accessories

Air Filter Primary	770201073
Air Filter Secondary	770201074
Oil Filter	770201072
Primary Fuel Filter	770201070
Secondary Fuel Filter	770201071
Alternator Belt.....	770201069



Cummins QSF2.8 Engine



Air Filter Inner



Air Filter Primary



Oil Filter John Deere



Alternator Belt



STS-132

Hydraulic Accessories

Brush Motor.....	750801005
Bulk Bin / Head Auger Motor.....	750801011
Charge Hopper Auger Motor.....	21050
Charge Hopper Auger Motor.....	21050

Bearings

Bulk Bin Bearing.....	740101013
Charge Hopper Bearing.....	740101010
Head Bearing.....	20135

Electrical Accessories

Bulk Bin Limit Switch.....	710101037
Charge Hopper Limit Switch.....	710101123
Encoder.....	710401057

Head & Brush Accessories

Brush Assembly with Shaft.....	700701052
Drum.....	16408

Material Measuring Accessories

Scale.....	21512
Test Pan.....	16151
Test Pan Metric.....	720602723



Brush Motor



Brush Assembly



Charge Hopper Limit Switch



Encoder

LASER GEAR & ACCESSORIES



Laser Transmitters

GL722..... 711301080

Dual Slope Transmitter with Handheld Receiver & Remote

Recommended For: S-22E

GL722-S..... 700301068

Dual Slope Transmitter with Handheld Receiver & Remote

Recommended For: S100, S160, S240, SXP, SXP-D

GL622..... 711301073

Dual Slope Transmitter with Handheld Receiver & Remote

Recommended For: MSC, XD3, S485, S840, S-15R

GL422..... 711301062

Dual Slope Transmitter with Handheld Receiver

Recommended For: XD1, XD2, PowerRake 1

LL500..... 711301033

Single Slope Transmitter with Handheld Receiver

Recommended For: MSC, XD1, XD2, XD3, S485, S840, S-15R

Handheld Receivers

CR600..... 711301050

HandheldReceiverClamp..... 710401289

Recommended for use with CR600, HL700 & HL750

HL700..... 711301069

Recommended for use with LL500 & GL422-S

HL750..... 711301071

Recommended for use with GL622

Transmitter Mounts, Tripods & Accessories

Column Clamp 700301411

Wooden Tripod Leg Set, 8 ft..... 20279

Elevating Base Threaded Mounting..... 20278

Fiberglass Tripod with Dual Lock Knobs..... 700301398

Quick Disconnect Adapter 20943

Quick Disconnect Kit for Transmitter..... 20942



GL722 Dual Grade Laser

GL622 Dual Grade Laser

LL500 Single Grade Laser



CR600 Receiver



HL700 Receiver



HL750 Receiver



8ft Tripod
w/ Elevating Base



Fiberglass Tripod



Column Clamp

LASER CONTROL GEAR & JOBSITE ACCESSORIES

Machine Laser Receivers

LR212-S Receiver	711301078
LR210-S Receiver	711301060
SSR2 Receiver	711301072
SSR Receiver	711301054

Control Boxes, Angle Sensors & Accessories

AS212-S Dual Axis Sensor	711301068
GCS21-S AS21-S Angle Sensor refurb only	711301005
Dust Cap	711001008
Connector, Bulkhead, 6 Pin, GCS21	710504007
Connector, Bulkhead, 6 Socket, GCS21	710504008
6 Pin Metal Socket Connector	26628
Triple Remote Box (TRB) refurb only	711301006
PQ Level Sensor (XD3 & MSC)	710101143
CBSSR Control Box (XD3 & MSC)	710101233
GCR4 Control Box (S9210, XD1 & XD3)	710101172

Machine Control Displays

S22 Dash Display (Color DP610)	710101425
SXP-D Dash Display (CAT)	710101400
S15R, S15M Dash Display	710101500
S840 Dash Display	710401319
S485 Dash Display	710101486
GCS21 Dual Control Box (DCB) refurb only	711301003

Grade Rods, Receiver Poles & Accessories

S-15, S485, S-840 Grade Rod	700301373
CopperHead®, Mini Screed™ Grade Rod	700601033
Grade Rod Ring	720601335
End Cap	740801220
Clamp Assembly	740402027
Grade Rod, Large Line Kit	700301147
Mount Block, Hand Rec	740801385
Collar clamp	740402016
End Cap	740801363
Quick Grade Set Upgrade Kit (MSC)	700701219
Quick Grade Set Upgrade Kit (XD3)	700701220
Quick Grade Set Upgrade Kit (S840/S-15)	700701221

Jobsite Accessories

Hose Pan Assembly	700501099
Lift Harness 28"	740801545
Lift Harness 48"	740801546
Mini Screed Rake	741101023
Standard Texas Placer	741101018
Pump Sprayer	40801737
48" Bull Float with Case & Poles	741101020
Channel Radius 8ft Float	741101021
Snap Handles	741101022



Refurbished DCB



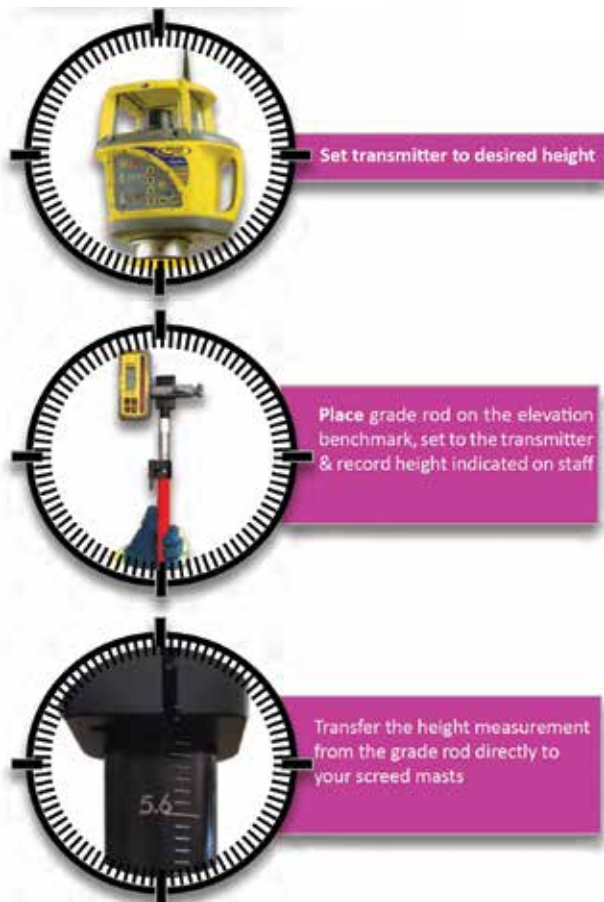
Refurbished AS21 Angle Sensor



Etched Mast Tube 485/840 Grade Rod Large Line Grade Rod

GRADE, SET & MATCH

HOW IT WORKS



KIT CONTAINS: 2 x etched anodized mast tubes, 2 x collars, prism pole grade rod with mount, & installation instructions

SOMERO® QUICK GRADE SET™

An innovative evolution of our grade rod & mast makes tranfering grade jobsite benchmark to your Somero equipment easier than ever. Available for MSC, Copperhead, S-485, S-840 & S15 Models



3-D PROFILER SYSTEM[®]

PARTS & ACCESSORIES



TOUGHBOOK

	CF-19	CF-18
Cable, USB Threaded.....	710301061	710301061
Accessories Kit.....	700301214	700301175
Battery.....	710401213	710401185
Carrying Case.....	740801431	740801431
Computer.....	710101389	710101389

UTS PARTS

Adapter, Receiver Tube to Target Mount.....	711001083
---	-----------

Batteries

Li-ion, 7.4V External Radio, UTS.....	710401235
Li-ion, 11.1V, UTS.....	710401236
Battery Charger, UTS.....	710401242
Battery Holder, UTS Power.....	710401237

Cables

Coil, Straight End 8 Ft.....	710601127
Coil UTS External Radio.....	710301065
2.5M 6 Con Hiroce, UTS.....	710301067
Power Supply, UTS Charger.....	710301069
UTS Ext, Computer Power 4 Pin.....	710301070
Car Power, UTS.....	710301064
MT900 Machine Target with Mount.....	700301234
Pos Plate, No Battery, UTS.....	700301240
Power Cable 2 pin, Radio/Power/Com.....	710301076
Power Cable 4 pin, Radio/Power/Com.....	710301066
Power Supply UTS Charger.....	710401239
Radio, External UTS Global.....	711301057
RMT 360 Survey Target, UTS.....	711301059
SPS730, UTS, Global.....	711301075
SPS930, UTS, Global.....	711301055
System Case 3-D Profiler System [®] , UTS.....	740801552



Panasonic Toughbook



SPS 930 UPS



MT900 with Mount

3-D PROFILER SYSTEM[®]

PARTS & ACCESSORIES



Bellows, Foot Switch, 3-D Profiler System[®],
SXP[®], SXP[®]-D, GCS210, S-240.....700301146
Boom Cord to CAN Module, SXP[®]710601084

Foot Switch

SXP[®]710101176
SXP[®]-D710101284
SXP[®]-D / S-240 GCS210710101304

GCS

GCS Power Module, Early Model Screeds710101068
Power Module, Regulated Radio710101197
Sonic Tracer Mount 3-D Profiler System[®]
Early Model Screeds 700301090
Sonic Tracer Mount 3-D SXP[®], SXP[®]-D700301119
Weldment, DC Power Supply Mount720601903

S-22E TB Install Kit

Assy. Sonic Tracer Mount700301477
Harness, 3D CAN S-22E711801191
3D Radio Pwr Adapter 4-2710301109
Cable, CAN-Serial, S-22E710601203
Adapter, Mast, Machine711001097
DC Power Supply Mount720504935

LAPTOP MOUNT HARDWARE

S-240, S-160, S-100
Arm/Tray Toughbook700301171

Machine Base, Rocky/Toughbook

S-240720601161
S-100, S-160720601037
SXP[®], SXP[®]-D
Arm/Tray, Toughbook700301170
Machine Base, Toughbook720601597
Tray, Toughbook (Small Line & S22E700301160

3D PARTS

CAN-USB Cable GCS2110601116
CAN-USB Cable GCS210 / S-840710301110
CAN Module710101384
CAN-USB Module710101232
Locking Handle for Sonic Tracer Mount400845
Mount Post, Target, Site Survey62032

Software

Version 14, Windows 7700301381

CORDS & CABLES

S-22E

OASIS

Wire Harness DP610.....	711801187
Harness Upperframe.....	711801202
Harness Lowerframe.....	711801177
Boom Cable.....	710601196
LR212-S Receiver Cable.....	710601127
AS212-S Angle Sensor Cable.....	710601198
Head Valve Drive Harness.....	711801188
Head Sensor Harness.....	711801190

SXP-D

GCS-210

Boom Cable.....	710601136
Bulkhead Adapter; Head Harness to Coil Cord (2).....	710601150
Cable; Head Harness to AS212.....	710601132
Coil Cable; Straight End.....	710601127
Elevation/SLS Valve Cable.....	710601138
Head Wire Harness; GCS210 (1) No Bulkheads.....	711801113
Head Wire Harness; SXP-D.....	711801107
Emergency Cable, 25 ft.....	710601129
Boom Cable.....	710601136
Coil Cord, AS-21 to LR-210.....	710601127
Stabilizer Position Sensor Cable (Screed Mode)	
LF.....	710301097
LR.....	710301099
RF.....	710301098
RR.....	710301100
Steer Position Sensor Cable	
Front.....	710301095
Rear.....	710301096

SXP-D

GCS21-S

Boom Cable.....	710601136
Emergency Cable, 25 ft.....	710601129
Coil Cord, AS-21 to LR-210.....	710601127
Head Wire Harness; SXP-D.....	711801107
Stabilizer Position Sensor Cable (Screed Mode)	
LF.....	710301097
LR.....	710301099
RF.....	710301098
RR.....	710301100
Steer Position Sensor Cable	
Front.....	710301095
Rear.....	710301096
TRB to SLS.....	710601141
TRB to Xslope 12.5 ft. Head.....	710601118

CORDS & CABLES

S-15R	OASIS	Main Wire Harness	711801207
		Head Wire Harness	11801208
		Head Sensor Wire Harness.....	711801214
		Boom Cable.....	710601181
		Angle Sensor Cable	710601198
		SSR Coil Cord	710601119
		Sensor Wire Harness.....	711801145
S-15M	OASIS	Main Wire Harness	711801163
		Head Wire Harness	711801153
		Sensor Interface Assembly	710101383
		Boom Cable.....	710601181
		Angle Sensor Cable	710601182
		SSR Coil Cord	710601119
		Sensor Wire Harness.....	711801145
S-840	OASIS	Angle Sensor Cable, Dirt Head.....	710601173
		Angle Sensor Cable, Laser Screed Head	710601170
		Breakaway / Manifold Wire Harness	711801146
		Bulkhead Assembly	710101365
		Cable Only.....	710601150
		SSR Coil Cord	710601119
		Sensor Wire Harness.....	711801145
S-485	OASIS	Head Harness.....	711801196
		Main Wire Harness	11801194
		Emergency SSR Cord	710601121
		SSR Coil Cord	710601119
		Harness HD Sensor.....	711801196
CopperHead & PowerRake	SSR	Head Disconnect to Harness.....	710601104
		Head Disconnect to Actuator	710601105
		SSR Coil Cord, XD.....	710601119
		SSR Coil Cord, PR.....	710601120
CopperHead & PowerRake	GCR	XD Head Disconnect to Harness	710601002
		XD Head Disconnect to Actuator.....	710601063
		Coil Cord GCR-4 XD 1.0, XD 2.0.....	710601069
		Coil Cord GCR-4 PowerRake®	710601113

CORDS & CABLES

SXP	GCS21-S	Auxiliary Cable, 25 ft.....	710601129
		Boom Cable.....	710601077
		Boom Cable, 12 Conductor (Auger/Vibrator)	710601094
		Coil Cord, Angle Sensor to LR21 Receiver.....	710601012
		Coil Cord, Angle Sensor to LR210 Receiver.....	710601127
		TRB to AS21 12.5 ft. Head.....	710601082
		TRB to SLS AS21 14.5 ft. Head	710601117
		TRB to Xslope AS21 14.5 ft. Head.....	710601118
S-240	GCS21-S	Auxiliary Cable, 25 ft.....	710601129
		Boom Cable, Elevation Self Level; TRB to End of Boom	710601005
		Coil Cord, Angle Sensor to Receiver.....	710601012
		End of Boom to Angle Sensor (AS21)	710601018
S-240	PA/SYS II	Boom Cord, Elevation Control; Control Box to End of Boom	16902
		Boom Cord, Self Level; Control Box to Slope Sensor.....	16895
		Coil Cord, Elevation Auxiliary; Receiver to Control Box	30504
		Coil Cord, End of Boom to Receiver	30506
		Coil Cord, Self Level Auxiliary; Slope Sensor to Control Box	16894
S-160	GCS21-S	Auxiliary Cable, 25 ft.....	710601129
		Boom Cable, Elevation Self Level; TRB to End of Boom	710601004
		Coil Cord Angle Sensor to Receiver.....	710601012
		End of Boom to Angle Sensor (AS21)	710601017
S-160	PA/SYS II	Boom Cord, Elevation Control; Control Box to End of Boom	401325
		Boom Cord, Self Level; Control Box to Slope Sensor.....	401326
		Coil Cord, Elevation Auxiliary; Receiver to Control Box	30504
		Coil Cord, End of Boom to Receiver	30506
		Coil Cord, Self Level Auxiliary; Slope Sensor to Control Box	16894
S-100	GCS21-S	Auxiliary Cable, 25 ft.....	710601129
		Boom Cable, Elevation Self Level; TRB to End of Boom	710601003
		Coil Cord; Angle Sensor to Receiver.....	710601012
		End of Boom to Angle Sensor (AS21)	710601016
S-100	PA/SYS II	Boom Cord, Elevation System; Laser Control Box to End of Boom.....	400485
		Boom Cord, Self Level; Control Box to Slope Sensor.....	400484
		Coil Cord, Elevation Auxiliary; Receiver to Control Box	30504
		Coil Cord, End of Boom to Receiver	30506
		Coil Cord, Self Level Auxiliary; Slope Sensor to Control Box	16894

AUGERS & ACCESSORIES

S-22E

S-22E 14ft Auger Kit	700701092
Contains 1 x Auger, 2 x Bearings, 2 x Guards, 8 x Compression Springs, 1 x End Cap & 12 x Grease	
S-22E 12ft Auger Kit	700701081
Contains 1 x Auger, 2 x Bearings, 2 x Guards, 8 x Compression Springs, 1 x End Cap & 12 x Grease	
S-22E 14ft Double Flight Auger Only	720601909
S-22E 12ft Double Flight Auger Only	720601691
Auger Bearing	20505
Auger Bearing Guard Seal	11769
Compression Springs (4 per bearing)	20448
Synthetic Grease	20500
Auger End Cap	740801735

SXP-D

SXP-D 14ft Auger Kit	700701134
Contains 1 x Auger, 2 x Bearings, 2 x Guards, 8 x Compression Springs, 1 x End Cap & 12 x Grease	
SXP-D 12.5ft Auger Kit	700701133
Contains 1 x Auger, 2 x Bearings, 2 x Guards, 8 x Compression Springs, 1 x End Cap & 12 x Grease	
SXP-D 14ft Double Flight Auger Only	720601909
SXP-D 12ft Double Flight Auger Only	720601691
Auger Bearing	740101061
Auger Bearing Guard Seal	11769
Compression Springs (4 per bearing)	20448
Synthetic Grease	20500
Auger End Cap	740801735

SXP

SXP 14ft Auger Kit	700701092
Contains 1 x Auger, 2 x Bearings, 2 x Guards, 8 x Compression Springs, 1 x End Cap & 12 x Grease	
SXP 12ft Auger Kit	700701081
Contains 1 x Auger, 2 x Bearings, 2 x Guards, 8 x Compression Springs, 1 x End Cap & 12 x Grease	
SXP 14ft Double Flight Auger Only	720601909
SXP 12ft Double Flight Auger Only	720601691
Auger Bearing	20505
Auger Bearing Guard Seal	11769
Compression Springs (4 per bearing)	20448
Synthetic Grease	20500
Auger End Cap	740801735

S-240

S-240 Auger Kit	700701076
S-240 Double Flight Auger Only	720601640
Auger Bearing	20505
Auger Bearing Guard Seal	11769
Compression Springs (4 per bearing)	20448
Synthetic Grease	20500
Auger End Cap	740801735

AUGERS & ACCESSORIES

S-15	8ft Auger Kit.....	700701077
	<small>Contains 1 x Auger, 2 x Bearings, 2 x Guards, 8 x Compression Springs, 1 x End Cap & 12 x Grease</small>	
	8ft Double Flight Auger Only.....	720602787
	Auger Bearing	740101090
	Auger Bearing Guard Seal	T1145
	Compression Springs (4 per bearing).....	20959
	Synthetic Grease	20500
S-840	Auger End Cap	740801735
S-100	
S-160	
SMP	SMP/PowerRake 3 Auger Only.....	720602464
	Auger Bearing	740101090
	Auger Bearing Guard Seal	T1145
	Compression Springs (4 per bearing).....	20959
	Synthetic Grease	20500
	Auger End Cap	740801735
PR3	
	
STS-132	Bulk Bin Auger	720401054
	Charge Hopper Auger	401497
STS-130	
	Bulk Bin Auger	720401054
	Auger Spacers	13160

GCR-4 TO SSR UPGRADE



Upgrade your old GCR-4 laser system from the XD1 & XD2 to the latest SSR system installed on our XD3 Models.

Benefits Include:

- GCR-4 Receiver no longer available
- Service parts becoming more scarce
- Moveable On Grade Set Point (adjust grade point direct from the dash)
- Quick Pass
- Smoother Control

Includes the following Items:

Control Box, SSR Receivers, Coil Cords, Dash Assembly, Wire Harness, Oscillation Lock Valve



SOMERO[®] SERVICE AGREEMENT

GET THE BEST PERFORMANCE & PRODUCTIVITY FROM YOUR SOMERO EQUIPMENT

- Perform all of the maintenance required on your machine.
- Repair small items immediately to avoid major breakdowns later.
- Ensure your operators are fully trained.
- Keep the recommended supply of emergency spares with the machine while operating.

The Somero Annual Service Agreement will help you meet all of these objectives.

The Service Agreement provides for:

Two days of onsite service or maintenance work annually with reduced rates for traveling to the customer. Also, a reduced labor rate for additional work performed.

An inspection of all your Somero machines when Customer Service Rep is onsite with a follow up report to alert you to any required repairs or maintenance to your fleet.

Training at our Florida facility.

A 15% discount on part purchases along with free standard shipping making it easier for you to keep your emergency spare parts kit complete.*

The Annual Service Agreement is intended to provide a reduced overall cost when customers take advantage of all services. You benefit by lowering your cost of ownership. You also benefit with better performance and productivity from highly trained operators and machines that are in top running condition.

WHEN SHOULD YOU CONSIDER THE CUSTOMER SERVICE AGREEMENT

- Your operator is new and needs training
- Your machine has been idle
- You have a big or high tolerance job coming up
- It has been a long time since your last job
- Your crew is placing frequent service calls to Somero
- The one year warranty has expired
- You need a large quantity of parts
- You have multiple machines
- You purchased a used machine
- Your machine hasn't been looked at by a Somero Customer Service Rep for over a year

*Excludes: All Trimble Related Products, (Laser, Surveying, (3D/SiteShape) and related components) Laptop Computers and accessories, and Control System updates, (Oasis, SSR, 3D/Siteshape, etc.)

ENGINE PARTS & FILTERS

Deutz Tier 4 Interim

Air Filter Primary	770201021
Air Filter Secondary	770201022
Oil Filter	20839
Fuel Filter	770101036
Alternator Belt.....	770101038
Engine Isolator	740801795

John Deere 4024

Air Filter Primary	770201021
Air Filter Secondary	770201022
Oil Filter	770201020
Fuel Filter	770201018
Alternator Belt.....	770201026
Catalytic Muffler	740801634
Alternator, 200 Amp.....	770201025
Alternator Belt.....	770201026
Starter Motor	770201023
Starter Solenoid.....	770201024
Hydraulic Oil Return Filter	20753
Hydraulic Oil High Pressure Filter.....	750701189

Cummins B3.3

Alternator Belt.....	740801142
Alternator, 120 Amp	710401078
Engine Isolator	740801525
Fuel Shut Off Solenoid.....	710401080
Pump Coupling.....	740801473
Pump Flex Plate.....	770201017
Starter Motor	710401077
Throttle Actuator	710101257
Water Pump.....	740801179
Air Filter (Metal Housing - SXP's Prior to 30226)	740501003
Air Filter (Plastic Housing - SXP's	740501029
Air Restriction Indicator	740801185
Fuel Filter	740501005
Fuel Banjo Fitting Screen/Filter	740501013
Inline Fuel Filter	740501026
Hydraulic High Pressure Filter 14"	750401016
6.75"	750401017
4.5"	750701114
Hydraulic Oil Return Filter	20753
Oil Filter	740501004

ENGINE PARTS & FILTERS

KUBOTA (V1505-E3B)

Air Filter Outer.....	750401055
Air Filter Inner.....	750401056
Oil Filter.....	750401057
Fuel Filter Spin On.....	750401058
Fuel Filter Inline.....	750401059
Fuel Pump.....	710401332
Fan Belt.....	740801705
Hydraulic Filter.....	750701073

HONDA (GX630)

Air Filter.....	770401100
Fuel Filter.....	770401101
Oil Filter.....	770401102
Spark Plug.....	770401104
Hydraulic Filter.....	750701073

ROBIN

13.5HP Robin EH41	
Engine Air Filter EH41.....	740501011
Carburetor EH41.....	770401021
Charge Coil EH41.....	710401164
Fuel Line.....	20706
Ignition Coil EH41.....	710401163
Starter Motor.....	710401166
Voltage Regulator.....	710401170
Hydraulic Oil Filter.....	750701073
14HP Robin EX40	
Engine Air Filter EX40.....	740501038
Voltage Regulator.....	710401170
Hydraulic Oil Filter.....	750701073
18HP, 20HP, 22HP Robin	
Carburetor.....	770401054
Charge Coil.....	710401275
Fuel Pump.....	710401279
Ignition Coil.....	710401276
Starter Motor.....	710401277
Voltage Regulator.....	710401241
Engine Air Filter.....	770401022
Engine Oil Filter.....	770401023
Fuel Filter.....	740501037
Hydraulic Oil Filter.....	750701073

HONDA 9HP

Engine Air Filter.....	770401007
Engine Fuel Filter.....	770401006
Hydraulic Oil Filter.....	750701052

ENGINE PARTS & FILTERS

KUBOTA (V1305)

Alternator, 60 Amp	15603
Engine Shut Off for V1200.....	20531-K
Engine Shut Off for V1305.....	20530
Starter Motor	24483
Thermostat for V1305.....	20171
V-belt for V1200.....	20224
V-belt for V1305.....	20950
Air Cleaner Element.....	20948
Fuel Filter Kit.....	20945
Fuel Filter only.....	750401058
Filter, Inline 10 Micron	20591
Hydraulic High Pressure Filter	750401017
Hydraulic Oil Return Filter	20753
Oil Filter, for Both V1200 & V1305	750401057
Water Separator Element.....	20397

DEUTZ 4 CYLINDER (9F4M1011F)

Alternator, 95Amp	710401061
Alternator Belt.....	20920
Fuel Shut Off Solenoid.....	21503
Starter Motor	21513
Timing Belt Kit	770101001-C1
Air Filter	20809
Fuel Filter.....	20919
FilterKitDeutz,S-240,4Cylinder	700701025
Filter Kit Deutz, S-160, 4 Cylinder	700701024
Hydraulic High Pressure Filter	750401016
Hydraulic Oil Return Filter	20753
Hydraulic Oil Filter S-160.....	20837
Oil Filter	20918
WaterSeparatorElement.....	20397

DEUTZ 3 CYLINDER (F3L9120)

Alternator, 85 Amp	20168
Alternator Belt, 60 Amp.....	20156
Alternator Belt, 85 Amp.....	20156-1
Blower V-Belt	20155
Engine Mount Foot.....	770101006
Fuel Pump	20674
Rubber Isolator Engine Mount	770101007
Starter Motor	20158
Air Filter Element.....	20145
Fuel Filter.....	20173
Hydraulic Oil Return Filter	20753
Oil Filter	20172
Water Separator Element.....	20397

HYDRAULIC CYLINDERS & PUMPS

S-22E	Hydraulic Pump.....	750901014
	SLS Cylinder.....	750101070
	Elevation Cylinder.....	750101091
	Boom Cylinder.....	750101097
	Stabilizer Cylinder.....	11630-002
	Steering Cylinder.....	750101073
	Head Rotate Cylinder.....	750101074
SXP-D	Hydraulic Pump.....	750901014
	SLS Cylinder.....	750101070
	Elevation Cylinder.....	11559
	Boom Cylinder.....	750101072
	Stabilizer Cylinder with Sensor.....	750101081
	Steering Cylinder.....	750101073
	Head Rotate Cylinder.....	750101074
SXP	Hydraulic Pump.....	750901020
	SLS Cylinder.....	401096
	Elevation Cylinder.....	11559
	Boom Cylinder.....	750101015
	Stabilizer Cylinder.....	11630-002
	Steering Cylinder.....	750101054
	Head Rotate Cylinder.....	750101051
S-15R S-15M	Hydraulic Pump.....	750901033
	SLS Cylinder.....	750101070
	Fixed Elevation Cylinder.....	750101078
	Pivot Elevation Cylinder.....	750101079
	Boom Cylinder.....	750101085
	Stabilizer Cylinder S-15R.....	750101093
	Stabilizer Cylinder S-15M.....	750101086
	Steering Cylinder.....	S8111
S-10A	Hydraulic Pump.....	750901040
	SLS Cylinder.....	750101070
	Fixed Elevation Cylinder.....	750101078
	Pivot Elevation Cylinder.....	750101079
	Boom Cylinder.....	750101085
	Stabilizer Cylinder S-10A.....	750101093
	Steering Cylinder.....	S8111
S-940 S-840	Hydraulic Pump.....	750901015
	SLS Cylinder.....	750101070
	Fixed Elevation Cylinder.....	750101078
	Pivot Elevation Cylinder.....	750101079

HYDRAULIC CYLINDERS & PUMPS

S-240

Hydraulic Pump Deutz	20660-HS
SLS Cylinder	401096
Elevation Cylinder	11599
Boom Cylinder	12632
Stabilizer Cylinder	11630-002
Steering Cylinder	750101054

S-160

Hydraulic Pump Deutz	700701116
Hydraulic Pump Cummins	750901006
SLS Cylinder	401096
Elevation Cylinder	11599
Boom Cylinder	S5572a
Stabilizer Cylinder	401314
Steering Cylinder	750101054

S-100

Hydraulic Pump	700701004
Hydraulic Pump Alternative	750901001
SLS Cylinder	401096
Elevation Cylinder	11599
Boom Cylinder	S7864
Stabilizer Cylinder	400525
Steering Cylinder	S8111

STS-132

Hydraulic Pump	750901020
Boom Cylinder	14274
Stabilizer Cylinder	401314
Steering Cylinder	750101054

STS-11M

Hydraulic Pump	750901033
Boom Cylinder	750101085
Stabilizer Cylinder	750101086
Steering Cylinder	S8111

STS-130

Hydraulic Pump	700701004
Boom Cylinder	14274
Side Shift Cylinder	13162

SP-80

Hydraulic Pump	750901002
Stabilizer Cylinder	11630-002
Steering Cylinder	750101054

VIBRATOR PARTS

S-22E

12ft Vibrator Beam (John Deere Serial 36001 - 36061).....	720508684
14ft Vibrator Beam (John Deere Serial 36001 - 36061).....	720508733
Vibrator Bearing (John Deere Serial 36001 - 36061).....	740101044
12ft Vibrator Shoe (Deutz Serial 36062 - Present)	720509717
14ft Vibrator Shoe (Deutz Serial 36062 - Present)	720509728
Vibrator Bearing (Deutz Serial 36062 - Present)	740101091
Shaft Motor End	720508679
Shaft Middles Pods	720508680
Shaft End Pods.....	720508827
Transfer Shaft Tube.....	720508799
Centaflex Element	24414
Rubber Mounts.....	20377
Vibrator Motor	20192

SXP-D SXP

14.5FT

Weldment, Vibrator Shoe (STV Only)	720602615
Center Shaft Bar, Bearing/Weight (STV Only)	720504731
Block Bearing (STV Only).....	720507274
Pod, Bearing/Weight (CSV Only)	700301222
Bearing Centre Shaft (CSV Only)	740101059
Coupling Jaw, Ruland (CSV Only)	740801514
Weight, Fixed, Center (CSV Only)	720504742
Weldment, Adj Weight (CSV Only).....	720602006
Transfer Shaft, Steel (CSV Only).....	720504761
Spider, Red, Ruland	740801515
Centaflex Element	24414
Motor Hub, Centaflex.....	18354
Rubber Mounts.....	20377
Vibrator Motor	20192

SXP-D SXP S240

12.5FT

Weldment, Vibrator Shoe	720601687
Bearing, 1" I.D	20135
Center Eccentric Weight	720502597
Coupling, Shaft w/Grease.....	720501252
Drive Shaft, Tube Vib.....	13555
End Eccentric Weight	720502598
Key, 1/4" SQ. X 1"	20468
Shaft Coupling and Weight	720502599
Shaft, Tube Vibrator Center.....	12291
Shaft, Tube Vibrator Intermediate	12290
Shaft, Tube Vibrator Intermediate U-Joint	13554
Shaft, Tube Vibrator Non Motor End	12289
U-Joint Cover.....	700701048
Rubber Mounts.....	20377
Vibrator Motor	20192

VIBRATOR PARTS

S-15M

S-15R

8' SHAFT VIBRATOR

Vibrator Motor	20192
Vibrator Beam	720509687
Shaft Motor End	720508679
Shaft Middles Pods	720508680
Shaft End Pods.....	720508827
Centaflex Element	24414
Rubber Mounts.....	20377

S-15M

S-15R

10' SHAFT VIBRATOR

Vibrator Motor	20192
Vibrator Beam	720509817
Shaft Motor End	720508679
Shaft Middles Pods	720508680
Shaft End Pods.....	720508827
Centaflex Element	24414
Rubber Mounts.....	20377

S-10A

S-940

10' VIBRATOR

Vibrator Motor	750801042
Vibrator Plate Assembly	700301530
Vibrator Bearing 2 Bolt SFT-12T.....	740101044
Vibrator Isolator	740801413
Weight, Adjustable, Vibrator Drive, Centa S-10A.....	720603169
Weldment - Weight Shaft, Vibrator Drive, Centa, S-10A.....	720603148
Centaflex Element	24414

S-940

7' VIBRATOR

Vibrator Motor	750801042
Vibrator Plate Assembly	700301585
Vibrator Bearing 2 Bolt SFT-12T.....	740101044
Vibrator Isolator	740801413
Weight, Adjustable, Vibrator Drive, Centa S-10A.....	720603169
Weldment - Weight Shaft, Vibrator Drive, Centa, S-10A.....	720603148
Centaflex Element	24414

S-840

Electric Vibrator Motor.....	710101348
Vibrator Plate	700301357
Vibrator Motor Mount Plate.....	720507564
Vibrator Linkage Assembly	700601138
Vibrator Isolator	740801413

S-485

Electric Vibrator Motor.....	710101348
Vibrator Plate	720507613
Vibrator Motor Mount Plate.....	720507564
Vibrator Linkage Assembly	700601138
Vibrator Isolator	740801413
Vibrator Plate	700301297

VIBRATOR PARTS

XD 3.0 XD 2.0

Vibrator Motor	750801042
Vibrator Shaft Weldment	720601774
Vibrator Bearing 1" 2 Bolt	20133
Vibrator Bearing 2 Bolt SFT-12T	740101044
Vibrator Isolator	740801413
Vibrator Beam	700601066
Vibrator Mount Plate	720503300

XD

Vibrator Motor	750801025
Vibrator Beam	720601587
Vibrator Gearbox	700301078
Vibrator Isolators	740801208

MSC

Electric Vibrator Motor	710101238
Vibrator Plate	700301297

S-100 S-160

Vibrator Motor	20192
Vibrator Bearing 1" 2 Bolt	20133
Centaflex Element	24414
Inboard Bearing Shaft	18841
Bearing, Non Motor End	18361
Shoe, 8" Sq. Tube Vib	S6409A
Rubber Mounts	20017



GLOBAL HEADQUARTERS & TRAINING FACILITY
14530 Global Parkway, Fort Myers, FL 33913 U.S.A.
1.239.210.6519

PRODUCTION, OPERATIONS, & SUPPORT
46980 Highway M26, Houghton, MI 49931 U.S.A.
1.906.482.7252

EUROPEAN SALES OFFICE
Broombank Road, Chesterfield Trading Estates, Derbyshire, UK 541 9QJ
+44 (0) 1246 454455

NORTHEAST ASIA SALES OFFICE
Building No. 3, 2399 Zhaochong Highway, Qingpu District, Shanghai, China 201706
+86-21-60259766

INDIA SALES OFFICE
573, 3rd Floor, Main Road, Chirag, New Delhi – 110017, India
+91 984 1510958